

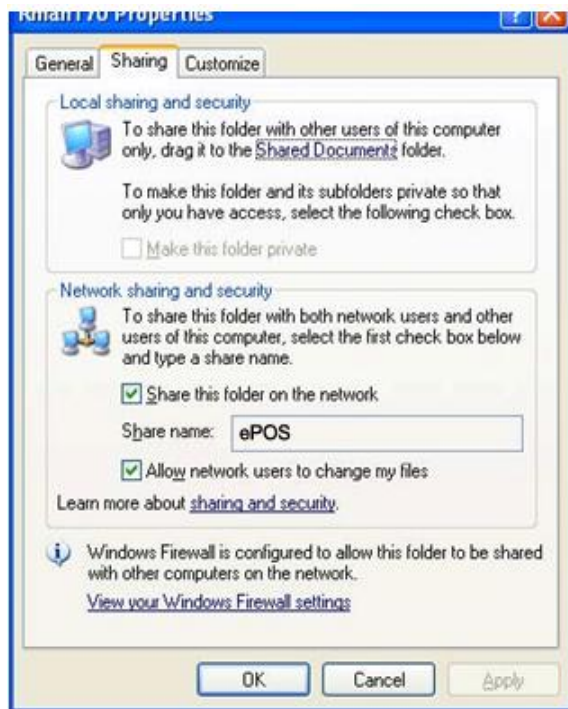
Setup of Server for ePOS & Networked Workstations

This document describes how to setup and run EPOS in a distributed environment with one server and several workstations. A minimum of a 2-user licence is required to run EPOS in this way.

Server Setup

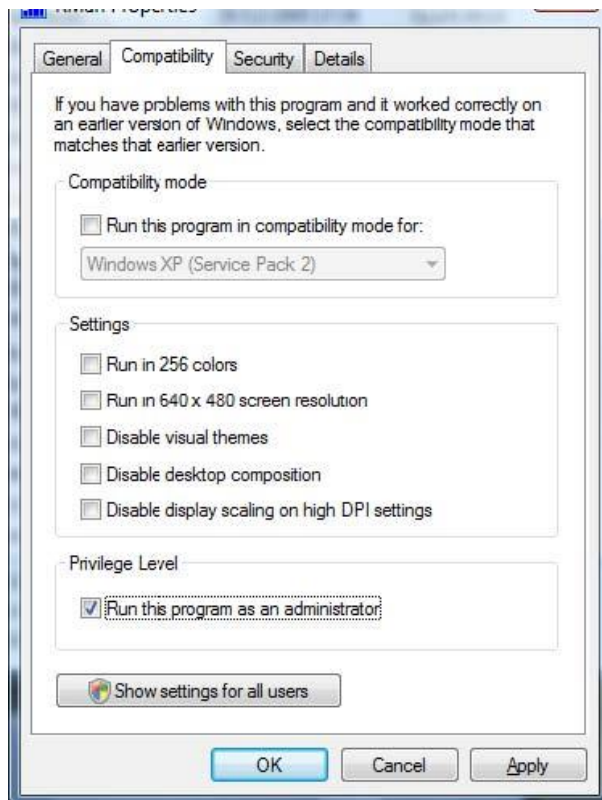
To make the system run on a network, do the following steps:

- Decide which computer is going to act as a server. This should be running Windows 2000, XP or Vista.
- Note the name of the server and the workgroup :- for Win XP, click on Start, Control Panel, double click on System, click on Computer Name tab.
- Set up the hard disk of that machine to be sharable, to do that, double click on My Computer, double click on the Hard Disk Drive Icon, left click on the ePOS folder, then right click on Sharing and Security. Give the drive a share name such as (EPOS) and make it fully sharable (Share this folder on the network, Allow network users to change my files).



If successful, you will see a hand under the ePOS folder when listed in Windows Explorer.

- On Windows XP ensure that the properties are changed on the ePOS executable to run the program as administrator. Open the folder containing the EPOS software, right click on epos.exe and select Properties.



Workstation Setup

To make the client run on a network, do the following steps:

- Ensure the client is in the same workgroup as the server. For Win XP, click on Start, Control Panel, double click on System, and click on Computer Name tab. If the workgroups are different, then change the workgroup on the client by clicking on the Change button beside "To rename this computer or join a domain".
- On each station, Double Click on Network Neighbourhood (for Windows 98) or (My Network Places) in 2000 or XP
- Once you see the server, double click on the server icon, then you should see the shared drive listed on the server.

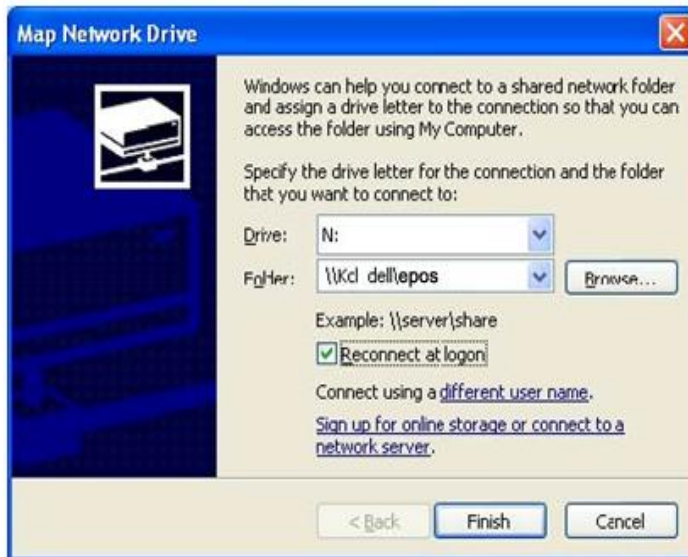
Shortcut using an Absolute Path Name

- Open the shared drive to list all the files, left click on epos.exe, right click and select the Create Shortcut option.
- The properties of the shortcut should have a Target similar to [\\SERVER\EPOS\EPOS.exe](#) and a Start in like [\\SERVER\EPOS\](#).
- Click on the OK button to save the shortcut to the desktop.

Note: The names of the server and the drive share name must follow the DOS naming conventions of 8 characters or less, otherwise you will be receiving program errors every time you try to run the program.

Or using a Mapped Network Drive

- Open the shared drive to list all the files, and then click on Tools, Map Network Drive option. This will cause a box similar to below to be displayed.



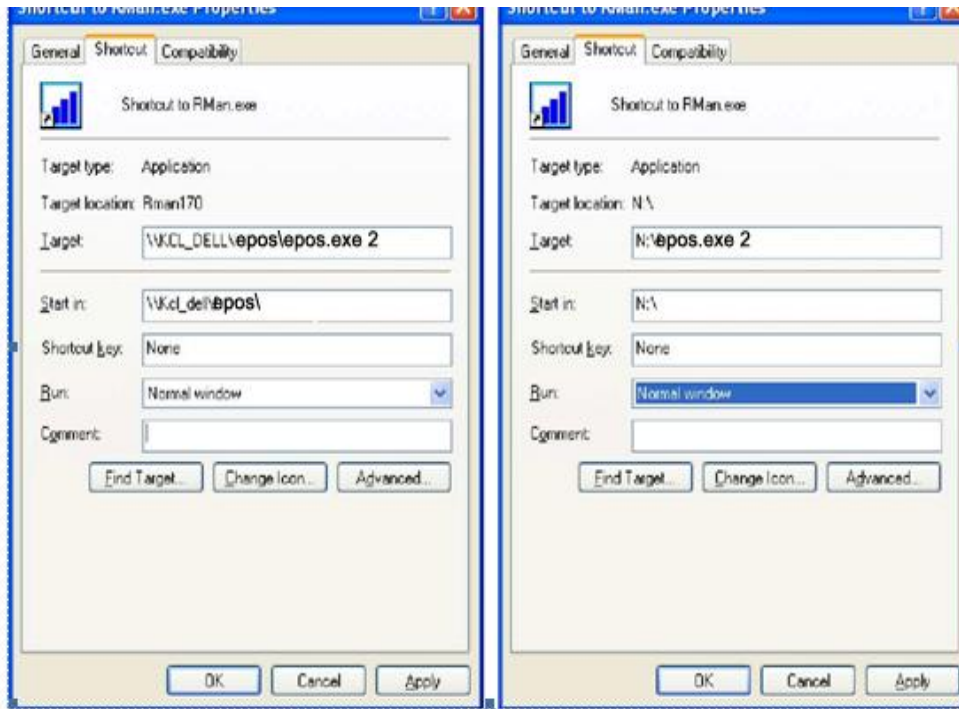
- Choose a network drive letter such as N. The folder should be listed similar to [\\SERVER\EPOS\](#). Click on the Browse button to change.
- Tick the Reconnect at logon tab, and save this setting.
- Click on the Finish button to create the network drive.
- Browse to the EPOS directory on the network drive (should be there already), then click on Create a Shortcut.
- The properties of the shortcut should have a Target similar to [N:\epos.exe](#) and a Start in like [N:\](#).
- Click on the OK button to save the shortcut to the desktop.

Either ways will work fine. The only thing you have to watch for is the network drive mapping in the second method may drop out if the server was not available when you start the stations, so you have to re-install it. The first method is more consistent and will work each and every time.

EPOS Station Setup

To setup each station to have its own peripheral devices such as POS printers, report printers, cash drawers and so on, you have to add the number of each station as a parameter to the program name in the program desktop short cut. The stations have to be numbered 1, 2, 3, 4 etc, then the short cut has to have the station number as follows :-

For station number 2, the TARGET field in the short cut should look something like C:\EPOS\EPOS.EXE 2. Epos.exe is the program name for EPOS. The examples below are for Station 2 using an Absolute Path Name and a Mapped Network Drive.



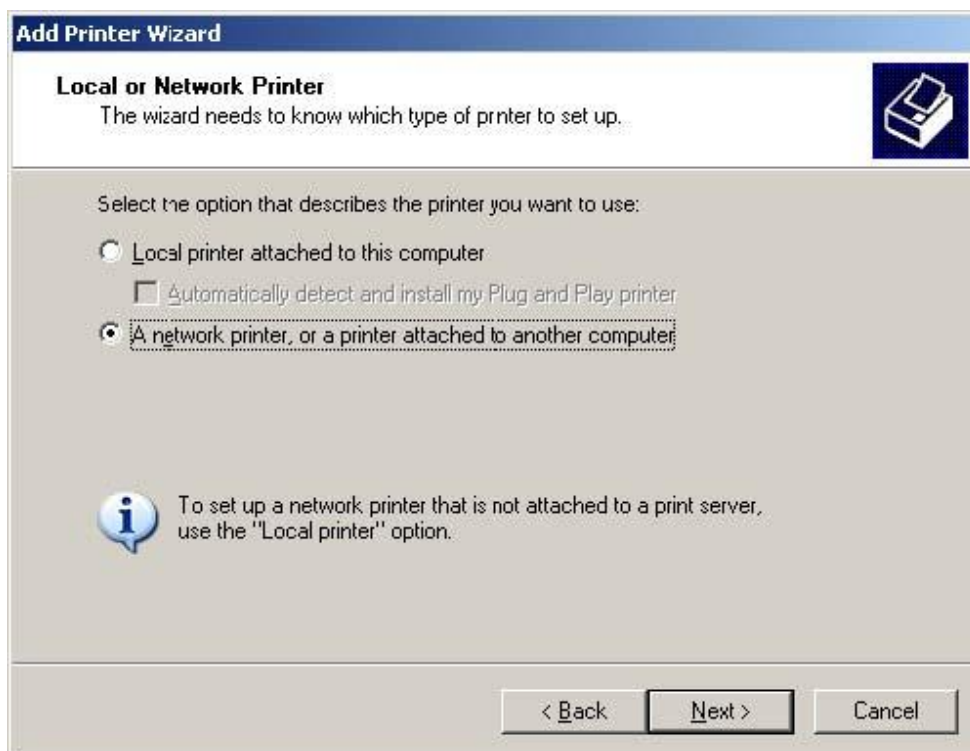
If you have setup the short cut correctly, when you start EPOS, you will see the Station No. displaying the number on the top right hand of the POS screen.

Network Printing for POS Printers

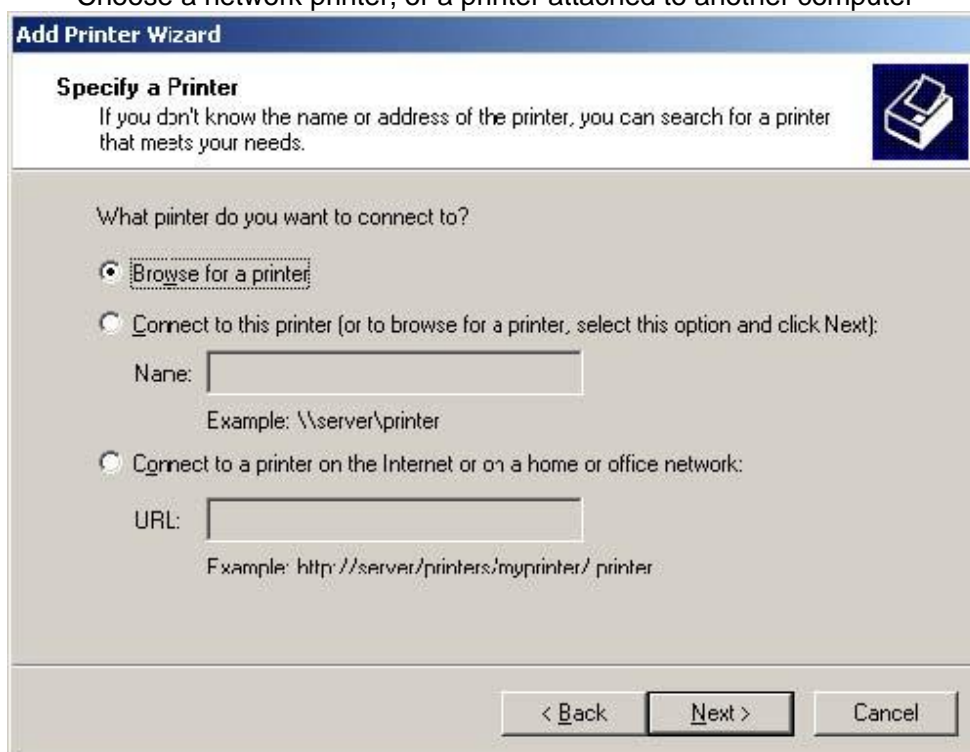
Please note the system uses the POS printer for printing the dockets only, and will use the Windows default printer to print all other documents. The default printer can also be a network printer connected to a different system.

To setup network printers, you have to setup the network users and stations first as shown in previous pages.

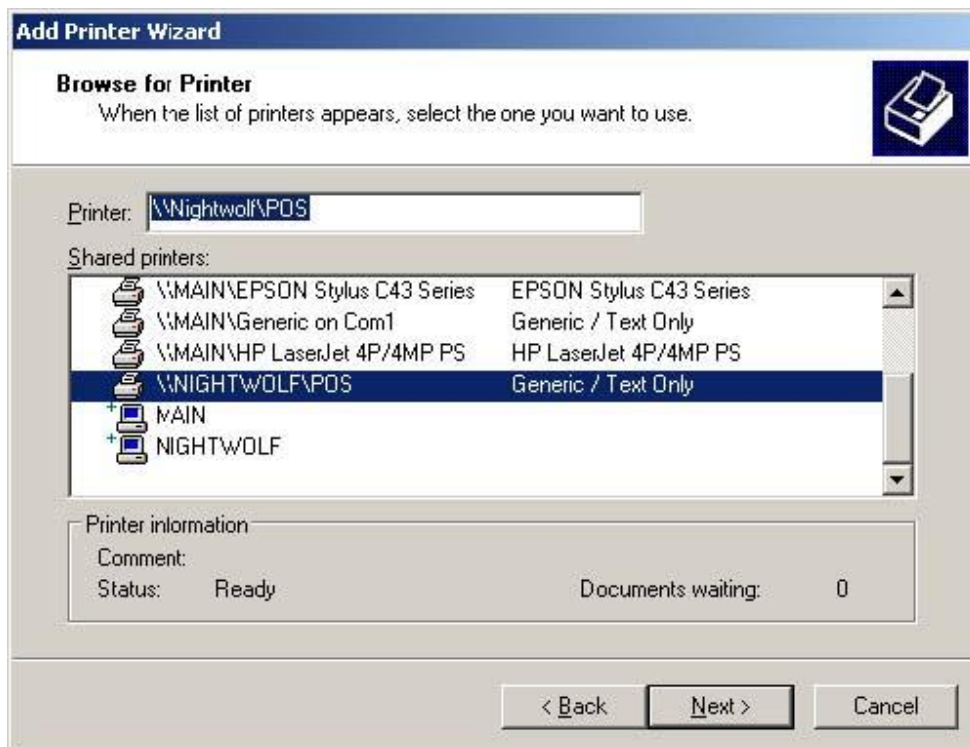
To setup a network point of sale printer, choose where the POS printer is needed to be located, then create a printer driver on that system (it has to be GENERIC, TEXT) then make it sharable. On the other stations under Windows, click START > SETTINGS > PRINTERS & FAXES and click ADD A NEW PRINTER



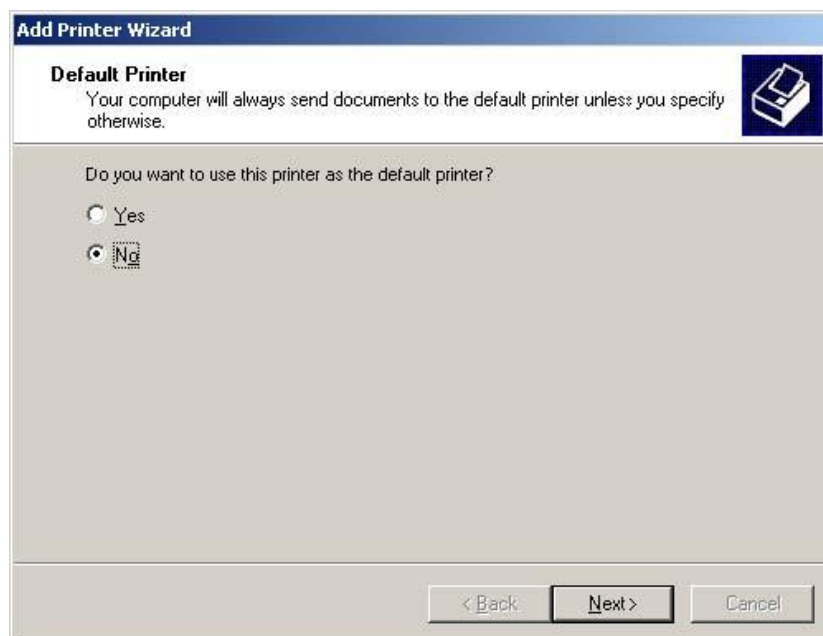
Choose a network printer, or a printer attached to another computer



Click Next to browse for a printer



Select the printer you want to use and click next



If you use another printer for printing reports and invoices, choose NO then click next and then click finish. Next open the program then go to MAINTENANCE > SYSTEM SETUP > HARDWARE and under the POS Printer chose the printer you just created and save

System Setup

Company General Sales Stock Purchase P.O.S Hardware Payments email Interface

Reports Printer

EPSON Stylus C43 Series

POS Printer

POS Printer: GENERIC POS PRINTER

Windows Driver: Auto POS on NIGHTWOLF

Double Width On: chr(14)

Double Width Off: chr(20)

Second Color on:

Second Color off:

Auto Cutter On:

Customer Pole Display

Generic on Com1

Line Feed: Chr(10)+chr(13)

CR Key Code: Chr(13)


Welcome Text: Welcome to
ABS Computers

Cash Drawer


Cash Drawer Connected to POS Printer

Cash Drawer 2

Open Drawer: chr(7)



Save (F2)



Close (Esc)